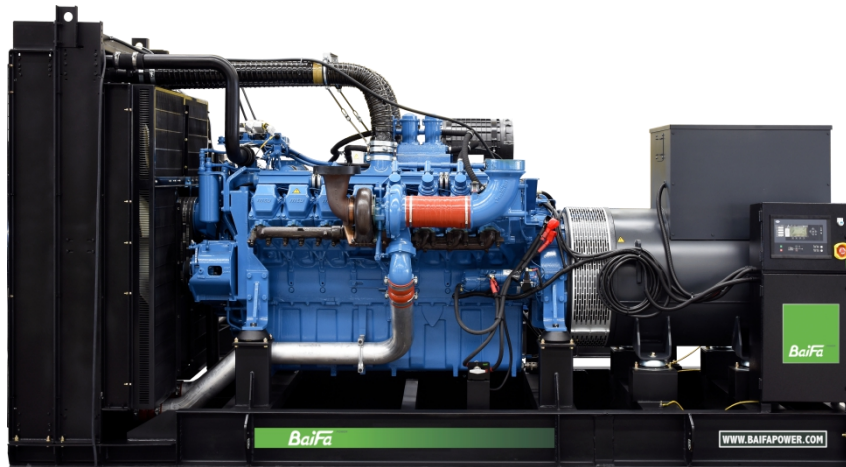


MODEL: BF-M825
400V | 1500rpm | 50Hz


ESP Standby Power	825 kVA	PRP Prime Power	750 kVA
ENGINE	MTU 12V2000G65	ALTERNATOR	STAMFORD S5L1D-H4

GENERAL FEATURES

Engine: MTU 12V2000G65

Alternator: single bearing, IP23, insulation class H

40°C radiator, fans are driven by belt, with safety guard

Dry type air filter, fuel filter & oil filter

Vibration damper

Standard control panel

24V charging alternator

Exhaust bellows, elbows, flange & muffler

Lead-acid batteries, rack and cables

User manual

Permanent Magnet Generator (PMG)

Comprehensive Solutions For
POWER GENERATION

MODEL: BF-M825

400V | 1500rpm | 50Hz

GENERATOR RATINGS

Voltage	Hz	Phase	PF (COSΦ)	Standby Amps	Standby Ratings (kW / kVA)	Prime Ratings (kW / kVA)
440/254	50	3	0.8	1083	660/825	600/750
415/240	50	3	0.8	1148	660/825	600/750
400/230	50	3	0.8	1191	660/825	600/750
380/220	50	3	0.8	1253	660/825	600/750

Prime Power (PRP): Prime power is available for an unlimited number of annual hours in variable load application, in accordance with GB/T2820 (eqv ISO8528) ; A 10% overload capability is available for a period of 1 hour within a 12-hour period of operation.

Standby Power Rating (ESP): The standby power rating is applicable for supplying emergency power for the duration of a utility power interruption. No overload, utility parallel or negotiated outage operation capability is available at this rating.

SALES PROMISES

Baifa Power provides a full line of brand new and high quality products. Each and every unit is strictly factory tested.

Warranty is according to our standard conditions: 15 months from the date BAIFA sold to the first buyer or one year after installation or 1000 running hours (accumulated), whichever comes first.

Service and parts are available from Baifa Power or distributors in your location.

Comprehensive Solutions For

POWER GENERATION

**MODEL: BF-M825****400V | 1500rpm | 50Hz**

ENGINE SPECIFICATION

Manufacturer / Model	MTU/12V2000G65
Air intake system	Turbocharged, Air/Air inter cooling
Fuel system	Electronic Fuel Injection System
Cylinder arrangement	12 in V
Displacement	23.88L
Bore and stroke	130×150 mm
Compression ratio	16:1
Rated speed	1500 rpm
Max. Standby power at rated speed	765kW (without fan)
Governor type	ADEC

Exhaust System

Exhaust gas flow	150 m ³ / min
Exhaust temperature	565 °C
Max back pressure	8.5 kPa

Air Intake System

Max intake restriction	5 kPa
Combustion air flow	54 m ³ /min
Air flow required for radiator	1062 m ³ /min

**MODEL: BF-M825****400V | 1500rpm | 50Hz****Fuel System**

Fuel consumption @ 100% (Prime Power) Load	201 g/kWh	159 L/h
Fuel consumption @ 75% (Prime Power) Load	203 g/kWh	122 L/h
Fuel consumption @ 50% (Prime Power) Load	210 g/kWh	87 L/h

Oil System

Total oil capacity	77L
Oil consumption	0.5% Fuel Consumption
Oil sump capacity	50~67L

Cooling System

Coolant capacity	180 L
Max water temperature	102°C



**MODEL: BF-M825****400V | 1500rpm | 50Hz**

ALTERNATOR SPECIFICATION

Industrial alternators meet the requirements of the relevant parts of the BS5000, VDE 0530, NEMA MG1-22, IEC34, CSA 22.2-100 and AS1359.

Alternator Data

Number of Phase	3
Connecting Type	3 Phase and 4 Wires, "Y" type connecting
Number of Bearing	1
Power Factor	0.8
Protection Class	IP23
Altitude	≤1000m
Exciter Type	Brushless, PMG exciting
Insulation Class/Temperature Rise	H/H
Telephone Influence Factor (TIF)	<50
THF	<2%
Alternator Capacity	750kVA
Alternator Efficiency	94.6%

**MODEL: BF-M825****400V | 1500rpm | 50Hz****GENERATING SET DATA**

Related range of voltage setting	$\geq \pm 5\%$
----------------------------------	----------------

Steady-state voltage deviation	$\leq \pm 1\%$
--------------------------------	----------------

Transient voltage deviation (100 % sudden power decrease)	$\leq +20\%$
---	--------------

Transient voltage deviation (sudden power increase)	$\leq -15\%$
---	--------------

Voltage recovery time (100 % sudden power decrease)	$\leq 4S$
---	-----------

Voltage recovery time (sudden power increase)	$\leq 4S$
---	-----------

Related range of frequency setting	0-5% adjustable
------------------------------------	-----------------

Steady-state frequency band	$\leq 0.5\%$
-----------------------------	--------------

Transient frequency deviation (100 % sudden power decrease)	$\leq +10\%$
---	--------------

Transient frequency deviation (sudden power increase)	$\leq -7\%$
---	-------------

Frequency recovery time (100 % sudden power decrease)	$\leq 3S$
---	-----------

Frequency recovery time (sudden power increase)	$\leq 3S$
---	-----------

STANDARD FEATURES

Comap standard auto control system	Exhaust system(including until muffler)	Documents
------------------------------------	--	-----------

Oil drain valve	Starting batteries (maintenance-free & watering-free) with connective wires	Fuel-Water separator
-----------------	--	----------------------

Permanent magnet generator (PMG)	Special coolant
----------------------------------	-----------------

MODEL: BF-M825**400V | 1500rpm | 50Hz****OPTIONS**

Daily fuel tank

Rainproof type

Remote control panel

Alternator heater

Soundproof type

Paralleling system

Spare parts

Trailer type

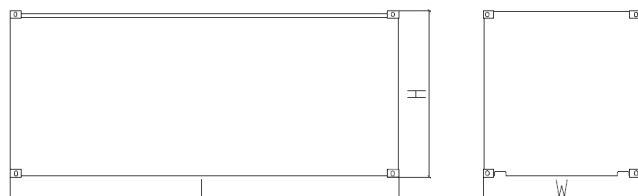
Switch box

Automatic transfer switch

DIMENSIONS & WEIGHT**Standard Configuration (open type)**

Overall Dimensions: 4060×1600×2210 mm

Weight: 6200 kg

**Soundproof Type (standard 20'ft GP container)**

Overall Dimensions: 6058×2438×2591 mm

Weight: 11200 kg

*Specifications are subject to change without notice.***BAIFA POWER (WUXI) LTD.****WEBSITE: WWW.BAIFAPOWER.COM****EMAIL: MARKETING@BAIFAPOWER.COM****TEL: +86-510-85342633**

Comprehensive Solutions For

POWER GENERATION