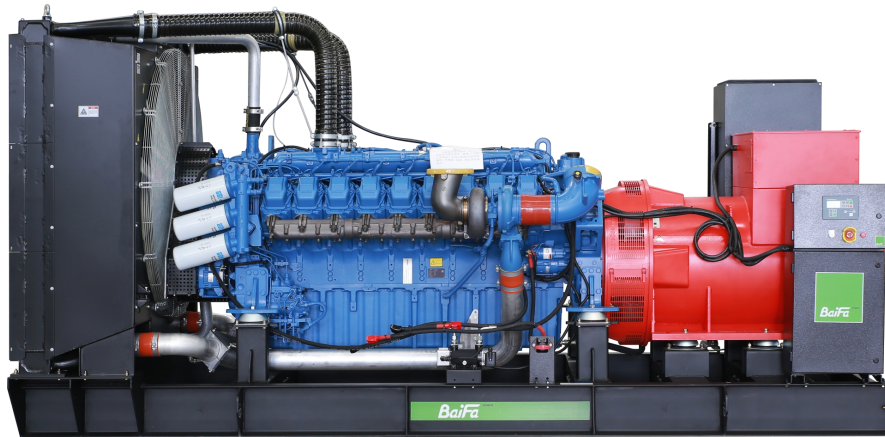


MODEL: BF-M1375
400V | 1500rpm | 50Hz


ESP Standby Power	1375 kVA	PRP Prime Power	1250 kVA
ENGINE	MTU 18V2000G26F	ALTERNATOR	STAMFORD S6L1D-G4

GENERAL FEATURES

Engine: MTU 18V2000G26F	Alternator: single bearing, IP23, insulation class H
40°C radiator, fans are driven by belt, with safety guard	Dry type air filter, fuel filter & oil filter
Vibration damper	Standard control panel
24V charging alternator	Exhaust bellows, elbows, flange & muffler
Lead-acid batteries, rack and cables	User manual
Permanent Magnet Generator (PMG)	

MODEL: BF-M1375**400V | 1500rpm | 50Hz****GENERATOR RATINGS**

Voltage	Hz	Phase	PF ($\cos\Phi$)	Standby Amps	Standby Ratings (kW / kVA)	Prime Ratings (kW / kVA)
440/254	50	3	0.8	1804	1100/1375	1000/1250
415/240	50	3	0.8	1913	1100/1375	1000/1250
400/230	50	3	0.8	1985	1100/1375	1000/1250
380/220	50	3	0.8	2089	1100/1375	1000/1250

Prime Power (PRP): Prime power is available for an unlimited number of annual hours in variable load application, in accordance with GB/T2820 (eqv ISO8528) ; A 10% overload capability is available for a period of 1 hour within a 12-hour period of operation.

Standby Power Rating (ESP): The standby power rating is applicable for supplying emergency power for the duration of a utility power interruption. No overload, utility parallel or negotiated outage operation capability is available at this rating.

SALES PROMISES

Baifa Power provides a full line of brand new and high quality products. Each and every unit is strictly factory tested.

Warranty is according to our standard conditions: 15 months from the date BAIFA sold to the first buyer or one year after installation or 1000 running hours (accumulated), whichever comes first.

Service and parts are available from Baifa Power or distributors in your location.

Comprehensive Solutions For

POWER GENERATION

**MODEL: BF-M1375****400V | 1500rpm | 50Hz****ENGINE SPECIFICATION**

Manufacturer / Model	MTU/18V2000G26F
----------------------	-----------------

Air intake system	Turbocharged, Air/Air inter cooling
-------------------	-------------------------------------

Fuel system	Electronic Fuel Injection System
-------------	----------------------------------

Cylinder arrangement	18 in V
----------------------	---------

Displacement	40.2L
--------------	-------

Bore and stroke	135×156 mm
-----------------	------------

Compression ratio	17.5:1
-------------------	--------

Rated speed	1500 rpm
-------------	----------

Max. Standby power at rated speed	1212kW (without fan)
-----------------------------------	----------------------

Governor type	ADEC
---------------	------

Exhaust System

Exhaust gas flow	231 m ³ /min
------------------	-------------------------

Exhaust temperature	500 °C
---------------------	--------

Max back pressure	5 kPa
-------------------	-------

Air Intake System

Max intake restriction	4 kPa
------------------------	-------

Combustion air flow	88 m ³ /min
---------------------	------------------------

Air flow required for radiator	1462 m ³ /min
--------------------------------	--------------------------

**MODEL: BF-M1375****400V | 1500rpm | 50Hz****Fuel System**

Fuel consumption @ 100% (Prime Power) Load	189 g/kWh	244 L/h
Fuel consumption @ 75% (Prime Power) Load	189 g/kWh	185 L/h
Fuel consumption @ 50% (Prime Power) Load	196 g/kWh	131 L/h

Oil System

Total oil capacity	122L
Oil consumption	0.5% Fuel Consumption
Oil sump capacity	87~110L

Cooling System

Coolant capacity	200 L
Max water temperature	102°C

**MODEL: BF-M1375****400V | 1500rpm | 50Hz**

ALTERNATOR SPECIFICATION

Industrial alternators meet the requirements of the relevant parts of the BS5000, VDE 0530, NEMA MG1-22, IEC34, CSA 22.2-100 and AS1359.

Alternator Data

Number of Phase	3
Connecting Type	3 Phase and 4 Wires, "Y" type connecting
Number of Bearing	1
Power Factor	0.8
Protection Class	IP23
Altitude	≤1000m
Exciter Type	Brushless, PMG exciting
Insulation Class/Temperature Rise	H/H
Telephone Influence Factor (TIF)	<50
THF	<2%
Alternator Capacity	1260 kVA
Alternator Efficiency	94.8%

MODEL: BF-M1375**400V | 1500rpm | 50Hz****GENERATING SET DATA**

Related range of voltage setting	$\geq \pm 5\%$
Steady-state voltage deviation	$\leq \pm 1\%$
Transient voltage deviation (100 % sudden power decrease)	$\leq +20\%$
Transient voltage deviation (sudden power increase)	$\leq -15\%$
Voltage recovery time (100 % sudden power decrease)	$\leq 4S$
Voltage recovery time (sudden power increase)	$\leq 4S$
Related range of frequency setting	0-5% adjustable
Steady-state frequency band	$\leq 0.5\%$
Transient frequency deviation (100 % sudden power decrease)	$\leq +10\%$
Transient frequency deviation (sudden power increase)	$\leq -7\%$
Frequency recovery time (100 % sudden power decrease)	$\leq 3S$
Frequency recovery time (sudden power increase)	$\leq 3S$

STANDARD FEATURES

Comap standard auto control system	Exhaust system(including until muffler)	Documents
Oil drain valve	Starting batteries (maintenance-free & watering-free) with connective wires	Fuel-Water separator
Permanent magnet generator (PMG)	Special coolant	

MODEL: BF-M1375**400V | 1500rpm | 50Hz****OPTIONS**

Daily fuel tank

Rainproof type

Remote control panel

Alternator heater

Soundproof type

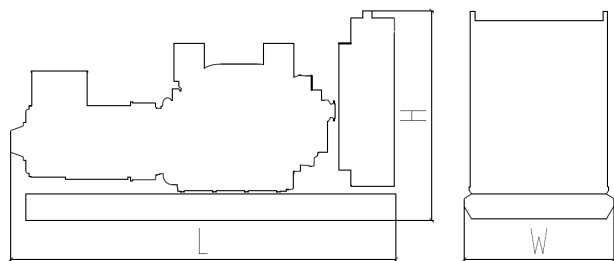
Paralleling system

Spare parts

Trailer type

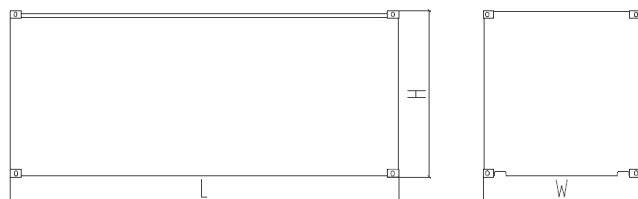
Switch box

Automatic transfer switch

DIMENSIONS & WEIGHT**Standard Configuration (open type)**

Overall Dimensions: 4700×1950×2450 mm

Weight: 8400 kg

**Soundproof Type (standard 20'ft HQ container)**

Overall Dimensions: 6058×2438×2896mm

Weight: 13400kg

*Specifications are subject to change without notice.***BAIFA POWER (WUXI) LTD.****WEBSITE: WWW.BAIFAPOWER.COM****EMAIL: MARKETING@BAIFAPOWER.COM****TEL: +86-510-85342633**

Comprehensive Solutions For

POWER GENERATION