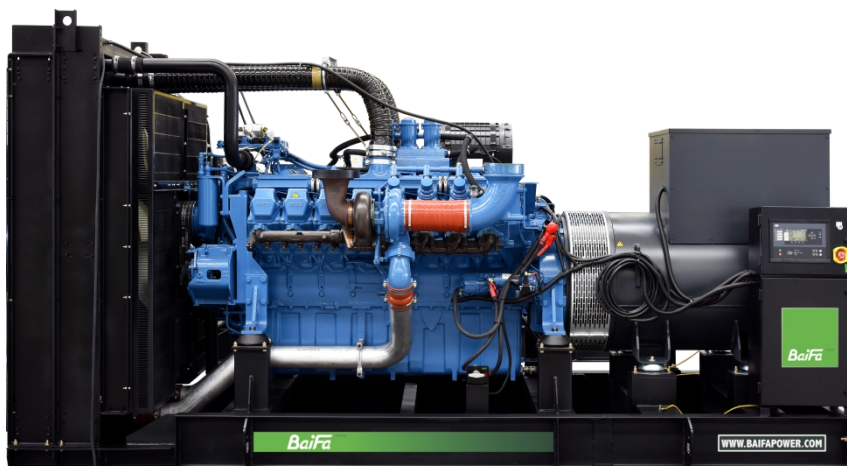


**MODEL: BF-M1100**
**400V | 1500rpm | 50Hz**


<b>ESP</b> Standby Power	<b>1100 kVA</b>	<b>PRP</b> Prime Power	<b>1000 kVA</b>
<b>ENGINE</b>	<b>MTU</b> <b>16V2000G65</b>	<b>ALTERNATOR</b>	<b>STAMFORD</b> <b>S6L1D-E4</b>

## GENERAL FEATURES

Engine: MTU 16V2000G65

Alternator: single bearing, IP23, insulation class H

40°C radiator, fans are driven by belt, with safety guard

Dry type air filter, fuel filter & oil filter

Vibration damper

Standard control panel

24V charging alternator

Exhaust bellows, elbows, flange & muffler

Lead-acid batteries, rack and cables

User manual

Permanent Magnet Generator ( PMG )

**MODEL: BF-M1100****400V | 1500rpm | 50Hz**

## GENERATOR RATINGS

Voltage	Hz	Phase	PF ( COS $\Phi$ )	Standby Amps	Standby Ratings (kW / kVA)	Prime Ratings ( kW / kVA)
440/254	50	3	0.8	1443	880/1100	800/1000
415/240	50	3	0.8	1530	880/1100	800/1000
400/230	50	3	0.8	1588	880/1100	800/1000
380/220	50	3	0.8	1671	880/1100	800/1000

**Prime Power (PRP):** Prime power is available for an unlimited number of annual hours in variable load application, in accordance with GB/T2820 (eqv ISO8528) ; A 10% overload capability is available for a period of 1 hour within a 12-hour period of operation.

**Standby Power Rating (ESP):** The standby power rating is applicable for supplying emergency power for the duration of a utility power interruption. No overload, utility parallel or negotiated outage operation capability is available at this rating.

## SALES PROMISES

Baifa Power provides a full line of brand new and high quality products. Each and every unit is strictly factory tested.

Warranty is according to our standard conditions: 15 months from the date BAIFA sold to the first buyer or one year after installation or 1000 running hours (accumulated), whichever comes first.

Service and parts are available from Baifa Power or distributors in your location.

Comprehensive Solutions For

**POWER GENERATION**

**MODEL: BF-M1100****400V | 1500rpm | 50Hz****ENGINE SPECIFICATION**

Manufacturer / Model	MTU/16V2000G65
----------------------	----------------

Air intake system	Turbocharged, Air/Air inter cooling
-------------------	-------------------------------------

Fuel system	Electronic Fuel Injection System
-------------	----------------------------------

Cylinder arrangement	16 in V
----------------------	---------

Displacement	31.84L
--------------	--------

Bore and stroke	130×150 mm
-----------------	------------

Compression ratio	16:1
-------------------	------

Rated speed	1500 rpm
-------------	----------

Max. Standby power at rated speed	979kW (without fan)
-----------------------------------	---------------------

Governor type	ADEC
---------------	------

**Exhaust System**

Exhaust gas flow	195 m <sup>3</sup> /min
------------------	-------------------------

Exhaust temperature	535 °C
---------------------	--------

Max back pressure	8.5 kPa
-------------------	---------

**Air Intake System**

Max intake restriction	5 kPa
------------------------	-------

Combustion air flow	72 m <sup>3</sup> /min
---------------------	------------------------

Air flow required for radiator	1236 m <sup>3</sup> /min
--------------------------------	--------------------------

**MODEL: BF-M1100****400V | 1500rpm | 50Hz****Fuel System**

Fuel consumption @ 100% (Prime Power) Load	201 g/kWh	209 L/h
Fuel consumption @ 75% (Prime Power) Load	196 g/kWh	155 L/h
Fuel consumption @ 50% (Prime Power) Load	201 g/kWh	109 L/h

**Oil System**

Total oil capacity	102L
Oil consumption	0.5% Fuel Consumption
Oil sump capacity	69~92L

**Cooling System**

Coolant capacity	230 L
Max water temperature	102°C



**MODEL: BF-M1100****400V | 1500rpm | 50Hz**

## ALTERNATOR SPECIFICATION

Industrial alternators meet the requirements of the relevant parts of the BS5000, VDE 0530, NEMA MG1-22, IEC34, CSA 22.2-100 and AS1359.

### Alternator Data

Number of Phase	3
Connecting Type	3 Phase and 4 Wires, "Y" type connecting
Number of Bearing	1
Power Factor	0.8
Protection Class	IP23
Altitude	≤1000m
Exciter Type	Brushless, PMG exciting
Insulation Class/Temperature Rise	H/H
Telephone Influence Factor (TIF)	<50
THF	<2%
Alternator Capacity	1050kVA
Alternator Efficiency	95.1%

**MODEL: BF-M1 100****400V | 1500rpm | 50Hz****GENERATING SET DATA**

Related range of voltage setting	$\geq \pm 5\%$
Steady-state voltage deviation	$\leq \pm 1\%$
Transient voltage deviation (100 % sudden power decrease)	$\leq +20\%$
Transient voltage deviation (sudden power increase)	$\leq -15\%$
Voltage recovery time (100 % sudden power decrease)	$\leq 4S$
Voltage recovery time (sudden power increase)	$\leq 4S$
Related range of frequency setting	0-5% adjustable
Steady-state frequency band	$\leq 0.5\%$
Transient frequency deviation (100 % sudden power decrease)	$\leq +10\%$
Transient frequency deviation (sudden power increase)	$\leq -7\%$
Frequency recovery time (100 % sudden power decrease)	$\leq 3S$
Frequency recovery time (sudden power increase)	$\leq 3S$

**STANDARD FEATURES**

Comap standard auto control system	Exhaust system( including until muffler)	Documents
Oil drain valve	Starting batteries ( maintenance-free & watering-free) with connective wires	Fuel-Water separator
Permanent magnet generator (PMG)	Special coolant	

**MODEL: BF-M1100****400V | 1500rpm | 50Hz****OPTIONS**

Daily fuel tank

Rainproof type

Remote control panel

Alternator heater

Soundproof type

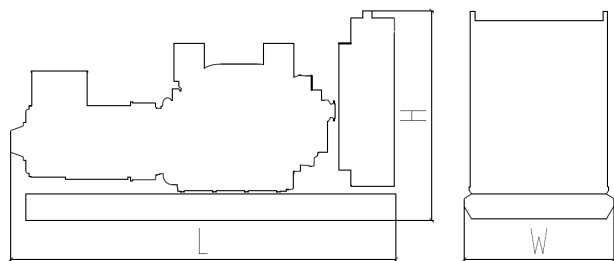
Paralleling system

Spare parts

Trailer type

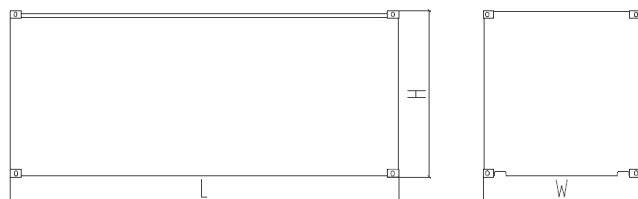
Switch box

Automatic transfer switch

**DIMENSIONS & WEIGHT****Standard Configuration (open type)**

Overall Dimensions: 4500×1600×2300 mm

Weight: 7200 kg

**Soundproof Type (standard 20'ft GP container)**

Overall Dimensions: 6058×2438×2591mm

Weight: 12200kg

*Specifications are subject to change without notice.***BAIFA POWER (WUXI) LTD.****WEBSITE: [WWW.BAIFAPOWER.COM](http://WWW.BAIFAPOWER.COM)****EMAIL: [MARKETING@BAIFAPOWER.COM](mailto:MARKETING@BAIFAPOWER.COM)****TEL: +86-510-85342633**

Comprehensive Solutions For

**POWER GENERATION**