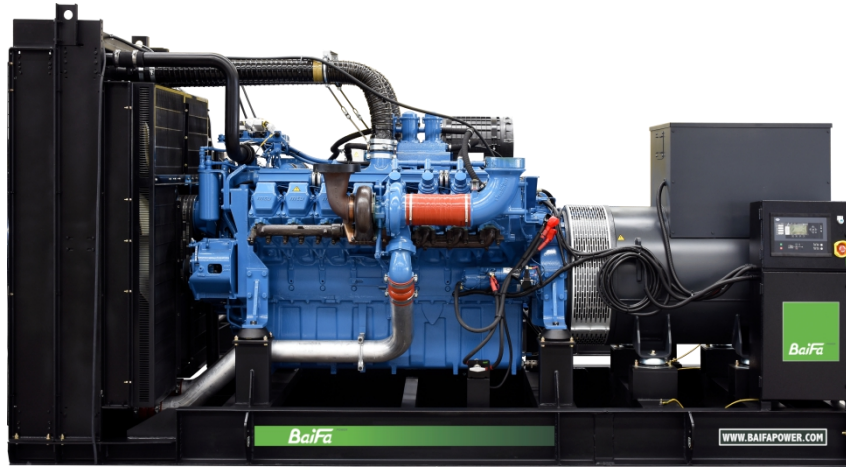


MODEL: BF-M1350-60

440V | 1800rpm | 60Hz



ESP Standby Power	1500kVA	PRP Prime Power	1362kVA
ENGINE	MTU 18V2000G85	ALTERNATOR	STAMFORD S6L1D-G4

GENERAL FEATURES

Engine: MTU 18V2000G85

Alternator: single bearing, IP23, insulation class H

40°C radiator, fans are driven by belt, with safety guard

Dry type air filter, fuel filter & oil filter

Vibration damper

Standard control panel

24V charging alternator

Exhaust bellows, elbows, flange & muffler

Lead-acid batteries, rack and cables

User manual

MODEL: BF-M1350-60**440V | 1800rpm | 60Hz**

GENERATOR RATINGS

Voltage	Hz	Phase	PF (COS Φ)	Standby Amps	Standby Ratings (kW / kVA)	Prime Ratings (kW / kVA)
480/277	60	3	0.8	1804	1200kW/1500kVA	1090kW/1362kVA
460/266	60	3	0.8	1883	1200kW/1500kVA	1090kW/1362kVA
440/254	60	3	0.8	1968	1200kW/1500kVA	1090kW/1362kVA
416/240	60	3	0.8	2082	1200kW/1500kVA	1090kW/1362kVA

Prime Power (PRP): Prime power is available for an unlimited number of annual hours in variable load application, in accordance with GB/T2820 (eqv ISO 8528) ; A 10% overload capability is available for a period of 1 hour within a 12-hour period of operation.

Standby Power Rating (ESP): The standby power rating is applicable for supplying emergency power for the duration of a utility power interruption. No overload, utility parallel or negotiated outage operation capability is available at this rating.

SALES PROMISES

Baifa Power provides a full line of brand new and high quality products. Each and every unit is strictly factory tested.

Warranty is according to our standard conditions: 15 months from the date BAIFA sold to the first buyer or one year after installation or 1000 running hours (accumulated), whichever comes first.

Service and parts are available from Baifa Power or distributors in your location.

**MODEL: BF-M1350-60****440V | 1800rpm | 60Hz****ENGINE SPECIFICATION**

Manufacturer / Model	MTU 18V2000G85
----------------------	----------------

Air intake system	Turbocharged, air/air intercooling
-------------------	------------------------------------

Fuel system	Electronic Fuel Injection System
-------------	----------------------------------

Cylinder arrangement	18 in V
----------------------	---------

Displacement	35.82L
--------------	--------

Bore and stroke	130×150 mm
-----------------	------------

Compression ratio	16
-------------------	----

Rated speed	1800rpm
-------------	---------

Max. Standby power at rated speed	1310kW
-----------------------------------	--------

Governor type	ADEC
---------------	------

Exhaust System

Exhaust gas flow	240 m ³ /min
------------------	-------------------------

Exhaust temperature	510°C
---------------------	-------

Max back pressure	8.5kPa
-------------------	--------

Air Intake System

Max intake restriction	5kPa
------------------------	------

Combustion air flow	102 m ³ /min
---------------------	-------------------------

Air flow required for radiator	1716 m ³ /min
--------------------------------	--------------------------

**MODEL: BF-M1350-60****440V | 1800rpm | 60Hz****Fuel System**

Fuel consumption @ 100% (Prime Power) Load	204g/kWh	290L/h
Fuel consumption @ 75% (Prime Power) Load	209g/kWh	225L/h
Fuel consumption @ 50% (Prime Power) Load	213g/kWh	158L/h

Oil System

Total oil capacity	130L
Oil consumption	0.5% of Fuel Consumption
Oil sump capacity	87-114L

Cooling System

Coolant capacity	248L
Max water temperature	102°C



**MODEL: BF-M1350-60****440V | 1800rpm | 60Hz**

ALTERNATOR SPECIFICATION

Industrial alternators meet the requirements of the relevant parts of the BS5000, VDE 0530, NEMA MG1-22, IEC34, CSA 22.2-100 and AS1359.

Alternator Data

Number of Phase	3
Connecting Type	3 Phase and 4 Wires, Y type connecting
Number of Bearing	1
Power Factor	0.8
Protection Class	IP23
Altitude	≤1000m
Exciter Type	Brushless exciting
Insulation Class/Temperature Rise	H/H
Telephone Influence Factor (TIF)	<50
THF	<2%
Alternator Capacity	1431kVA
Alternator Efficiency	94.9%

**MODEL: BF-M1350-60****440V | 1800rpm | 60Hz**

GENERATING SET DATA

Related range of voltage setting	$\geq \pm 5\%$
----------------------------------	----------------

Steady-state voltage deviation	$\leq \pm 1\%$
--------------------------------	----------------

Transient voltage deviation (100 % sudden power decrease)	$\leq +20\%$
---	--------------

Transient voltage deviation (sudden power increase)	$\leq -15\%$
---	--------------

Voltage recovery time (100 % sudden power decrease)	$\leq 4S$
---	-----------

Voltage recovery time (sudden power increase)	$\leq 4S$
---	-----------

Related range of frequency setting	0-5% adjustable
------------------------------------	-----------------

Steady-state frequency band	$\leq 0.5\%$
-----------------------------	--------------

Transient frequency deviation (100 % sudden power decrease)	$\leq +10\%$
---	--------------

Transient frequency deviation (sudden power increase)	$\leq -7\%$
---	-------------

Frequency recovery time (100 % sudden power decrease)	$\leq 3S$
---	-----------

Frequency recovery time (sudden power increase)	$\leq 3S$
---	-----------

STANDARD FEATURES

Standard auto control system

Exhaust system (including until muffler)

Documents

Oil drain valve

Starting batteries (maintenance-free & watering-free) with connective wires

Fuel-Water separator

Special coolant

MODEL: BF-M1350-60**440V | 1800rpm | 60Hz****OPTIONS**

Daily fuel tank

Rainproof type

Remote control panel

Alternator heater

Soundproof type

Paralleling system

Spare parts

Trailer type

Switch box

Automatic transfer switch

DIMENSIONS & WEIGHT**Standard Configuration (open type)**

Overall Dimensions: 4800×1950×2450 mm

Weight: 8500kg

**Soundproof Type (standard 20'ft GP container)**

Overall Dimensions: 6058×2438×2591 mm

Weight: 13500kg

*Specifications are subject to change without notice.***BAIFA POWER (WUXI) LTD.****WEBSITE: WWW.BAIFAPOWER.COM****EMAIL: MARKETING@BAIFAPOWER.COM****TEL: +86-510-85342633**

Comprehensive Solutions For

POWER GENERATION