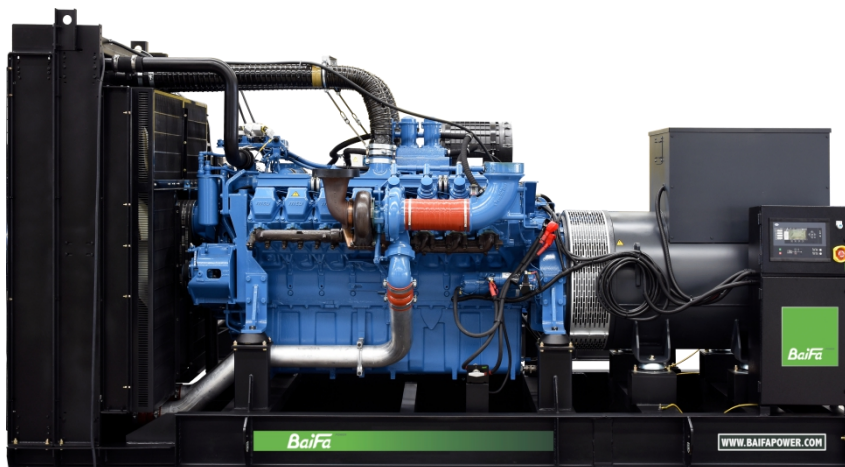


MODEL: BF-M1100-60

440V | 1800rpm | 60Hz



ESP

Standby Power

1265kVA

PRP

Prime Power

1150kVA

ENGINE

MTU

16V2000G85

ALTERNATOR

STAMFORD

S6L1D-E4

## GENERAL FEATURES

Engine: MTU 16V2000G85

Alternator: single bearing, IP23, insulation class H

40°C radiator, fans are driven by belt, with safety guard

Dry type air filter, fuel filter & oil filter

Vibration damper

Standard control panel

24V charging alternator

Exhaust bellows, elbows, flange & muffler

Lead-acid batteries, rack and cables

User manual

**MODEL: BF-M1100-60****440V | 1800rpm | 60Hz****GENERATOR RATINGS**

Voltage	Hz	Phase	PF ( COS $\Phi$ )	Standby Amps	Standby Ratings (kW / kVA)	Prime Ratings (kW / kVA)
480/277	60	3	0.8	1522	1012kW/1265kVA	920kW/1150kVA
460/266	60	3	0.8	1588	1012kW/1265kVA	920kW/1150kVA
440/254	60	3	0.8	1660	1012kW/1265kVA	920kW/1150kVA
416/240	60	3	0.8	1756	1012kW/1265kVA	920kW/1150kVA

**Prime Power (PRP):** Prime power is available for an unlimited number of annual hours in variable load application, in accordance with GB/T2820 (eqv ISO 8528) ; A 10% overload capability is available for a period of 1 hour within a 12-hour period of operation.

**Standby Power Rating (ESP):** The standby power rating is applicable for supplying emergency power for the duration of a utility power interruption. No overload, utility parallel or negotiated outage operation capability is available at this rating.

**SALES PROMISES**

Baifa Power provides a full line of brand new and high quality products. Each and every unit is strictly factory tested.

Warranty is according to our standard conditions: 15 months from the date BAIFA sold to the first buyer or one year after installation or 1000 running hours (accumulated), whichever comes first.

Service and parts are available from Baifa Power or distributors in your location.

Comprehensive Solutions For

**POWER GENERATION**

**MODEL: BF-M1100-60****440V | 1800rpm | 60Hz****ENGINE SPECIFICATION**

Manufacturer / Model	MTU 16V2000G85
----------------------	----------------

Air intake system	Turbocharged, air/air intercooling
-------------------	------------------------------------

Fuel system	Electronic Fuel Injection System
-------------	----------------------------------

Cylinder arrangement	16 in V
----------------------	---------

Displacement	31.84L
--------------	--------

Bore and stroke	130×150 mm
-----------------	------------

Compression ratio	16
-------------------	----

Rated speed	1800rpm
-------------	---------

Max. Standby power at rated speed	1114kW
-----------------------------------	--------

Governor type	ADEC
---------------	------

**Exhaust System**

Exhaust gas flow	210 m <sup>3</sup> /min
------------------	-------------------------

Exhaust temperature	530°C
---------------------	-------

Max back pressure	8.5kPa
-------------------	--------

**Air Intake System**

Max intake restriction	5kPa
------------------------	------

Combustion air flow	84 m <sup>3</sup> /min
---------------------	------------------------

Air flow required for radiator	1476 m <sup>3</sup> /min
--------------------------------	--------------------------

**MODEL: BF-M1100-60****440V | 1800rpm | 60Hz****Fuel System**

Fuel consumption @ 100% (Prime Power) Load	205g/kWh	245L/h
Fuel consumption @ 75% (Prime Power) Load	209g/kWh	190L/h
Fuel consumption @ 50% (Prime Power) Load	213g/kWh	133L/h

**Oil System**

Total oil capacity	102L
Oil consumption	0.5% of Fuel Consumption
Oil sump capacity	69-99L

**Cooling System**

Coolant capacity	223L
Max water temperature	102°C



**MODEL: BF-M1100-60****440V | 1800rpm | 60Hz**

## ALTERNATOR SPECIFICATION

Industrial alternators meet the requirements of the relevant parts of the BS5000, VDE 0530, NEMA MG1-22, IEC34, CSA 22.2-100 and AS1359.

### Alternator Data

Number of Phase	3
Connecting Type	3 Phase and 4 Wires, Y type connecting
Number of Bearing	1
Power Factor	0.8
Protection Class	IP23
Altitude	≤1000m
Exciter Type	Brushless exciting
Insulation Class/Temperature Rise	H/H
Telephone Influence Factor (TIF)	<50
THF	<2%
Alternator Capacity	1200kVA
Alternator Efficiency	95.3%

**MODEL: BF-M1100-60****440V | 1800rpm | 60Hz**

## GENERATING SET DATA

Related range of voltage setting	$\geq \pm 5\%$
----------------------------------	----------------

Steady-state voltage deviation	$\leq \pm 1\%$
--------------------------------	----------------

Transient voltage deviation (100 % sudden power decrease)	$\leq +20\%$
---	--------------

Transient voltage deviation (sudden power increase)	$\leq -15\%$
---	--------------

Voltage recovery time (100 % sudden power decrease)	$\leq 4S$
---	-----------

Voltage recovery time (sudden power increase)	$\leq 4S$
---	-----------

Related range of frequency setting	0-5% adjustable
------------------------------------	-----------------

Steady-state frequency band	$\leq 0.5\%$
-----------------------------	--------------

Transient frequency deviation (100 % sudden power decrease)	$\leq +10\%$
---	--------------

Transient frequency deviation (sudden power increase)	$\leq -7\%$
---	-------------

Frequency recovery time (100 % sudden power decrease)	$\leq 3S$
---	-----------

Frequency recovery time (sudden power increase)	$\leq 3S$
---	-----------

## STANDARD FEATURES

Standard auto control system

Exhaust system (including until muffler)

Documents

Oil drain valve

Starting batteries (maintenance-free &amp; watering-free) with connective wires

Fuel-Water separator

Special coolant

**MODEL: BF-M1100-60****440V | 1800rpm | 60Hz****OPTIONS**

Daily fuel tank

Rainproof type

Remote control panel

Alternator heater

Soundproof type

Paralleling system

Spare parts

Trailer type

Switch box

Automatic transfer switch

**DIMENSIONS & WEIGHT****Standard Configuration (open type)**

Overall Dimensions: 4500×1600×2300 mm

Weight: 7200kg

**Soundproof Type (standard 20'ft GP container)**

Overall Dimensions: 6058×2438×2591 mm

Weight: 12200kg

*Specifications are subject to change without notice.***BAIFA POWER (WUXI) LTD.****WEBSITE: [WWW.BAIFAPOWER.COM](http://WWW.BAIFAPOWER.COM)****EMAIL: [MARKETING@BAIFAPOWER.COM](mailto:MARKETING@BAIFAPOWER.COM)****TEL: +86-510-85342633**

Comprehensive Solutions For

**POWER GENERATION**