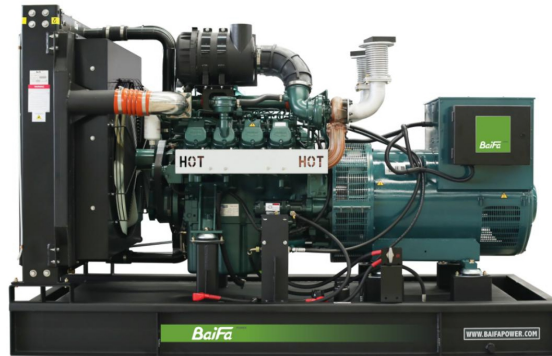


**MODEL: BF-DW190**

**400V | 1500rpm | 50Hz**



<b>ESP</b> Standby Power	<b>187.5 kVA</b>	<b>PRP</b> Prime Power	<b>168.8 kVA</b>
<b>ENGINE</b>	<b>Doosan</b> <b>P086TI-1</b>	<b>ALTERNATOR</b>	<b>STAMFORD</b> <b>UCI274G1</b>

## GENERAL FEATURES

Engine: Doosan P086TI-1

Alternator: single bearing, IP23, insulation class H

40°C radiator, fans are driven by belt, with safety guard

Dry type air filter, fuel filter & oil filter

Vibration damper

Standard control panel

24V charging alternator

Exhaust bellows, elbows, flange & muffler

Lead-acid batteries, rack and cables

User manual

**MODEL: BF-DW190****400V | 1500rpm | 50Hz**

## GENERATOR RATINGS

Voltage	Hz	Phase	PF ( COS $\Phi$ )	Standby Amps	Standby Ratings (kW / kVA)	Prime Ratings (kW / kVA)
440/254	50	3	0.8	246	150KW/187.5KVA	135KW/168.8KVA
415/240	50	3	0.8	261	150KW/187.5KVA	135KW/168.8KVA
400/230	50	3	0.8	271	150KW/187.5KVA	135KW/168.8KVA
380/220	50	3	0.8	285	150KW/187.5KVA	135KW/168.8KVA

Prime Power (PRP): Prime power is available for an unlimited number of annual hours in variable load application, in accordance with GB/T2820 (eqv ISO 8528) ; A 10% overload capability is available for a period of 1 hour within a 12-hour period of operation.

Standby Power Rating (ESP): The standby power rating is applicable for supplying emergency power for the duration of a utility power interruption. No overload, utility parallel or negotiated outage operation capability is available at this rating.

## SALES PROMISES

Baifa Power provides a full line of brand new and high quality products. Each and every unit is strictly factory tested.

Warranty is according to our standard conditions: 15 months from the date BAIFA sold to the first buyer or one year after installation or 1000 running hours (accumulated), whichever comes first.

Service and parts are available from Baifa Power or distributors in your location.

**MODEL: BF-DW190****400V | 1500rpm | 50Hz****ENGINE SPECIFICATION**

Manufacturer / Model	Doosan P086TI-1
Air intake system	Turbo, Air/Air cooling
Fuel system	P type fuel pump
Cylinder arrangement	6 in line
Displacement	8.071L
Bore and stroke	111×139 mm
Compression ratio	16.4:1
Rated speed	1500rpm
Max. Standby power at rated speed	164KW
Governor type	Electronic

**Exhaust System**

Exhaust gas flow	33.9 m <sup>3</sup> /min
Exhaust temperature	530℃
Max back pressure	5.8kPa

**Air Intake System**

Max intake restriction	6.1kPa
Combustion air flow	13.9 m <sup>3</sup> /min
Air flow required for radiator	450 m <sup>3</sup> /min



**MODEL: BF-DW190**

**400V | 1500rpm | 50Hz**

#### Fuel System

Fuel consumption @ 100% (Prime Power) Load	35.4 L/h
--	----------

Fuel consumption @ 75% (Prime Power) Load	26.7 L/h
---	----------

Fuel consumption @ 50% (Prime Power) Load	18.7 L/h
---	----------

#### Oil System

Total oil capacity	18L
--------------------	-----

Oil sump capacity	12-15.5L
-------------------	----------

#### Cooling System

Coolant capacity	48.5L
------------------	-------

Max water temperature	103°C
-----------------------	-------

**MODEL: BF-DW190****400V | 1500rpm | 50Hz**

## ALTERNATOR SPECIFICATION

Industrial alternators meet the requirements of the relevant parts of the BS5000, VDE 0530, NEMA MG1-22, IEC34, CSA 22.2-100 and AS1359.

### Alternator Data

Number of Phase	3
Connecting Type	3 Phase and 4 Wires, Y type connecting
Number of Bearing	1
Power Factor	0.8
Protection Class	IP23
Altitude	≤1000m
Exciter Type	Brushless exciting
Insulation Class/Temperature Rise	H/H
Telephone Influence Factor (TIF)	<50
THF	<2%
Alternator Capacity	182kVA
Alternator Efficiency	92.3%

**MODEL: BF-DW190****400V | 1500rpm | 50Hz****GENERATING SET DATA**

Related range of voltage setting	$\geq \pm 5\%$
----------------------------------	----------------

Steady-state voltage deviation	$\leq \pm 1\%$
--------------------------------	----------------

Transient voltage deviation (100 % sudden power decrease)	$\leq +25\%$
---	--------------

Transient voltage deviation (sudden power increase)	$\leq -20\%$
---	--------------

Voltage recovery time (100 % sudden power decrease)	$\leq 6S$
---	-----------

Voltage recovery time (sudden power increase)	$\leq 6S$
---	-----------

Related range of frequency setting	0-5% adjustable
------------------------------------	-----------------

Steady-state frequency band	$\leq 1.5\%$
-----------------------------	--------------

Transient frequency deviation (100 % sudden power decrease)	$\leq +12\%$
---	--------------

Transient frequency deviation (sudden power increase)	$\leq -10\%$
---	--------------

Frequency recovery time (100 % sudden power decrease)	$\leq 5S$
---	-----------

Frequency recovery time (sudden power increase)	$\leq 5S$
---	-----------

**STANDARD FEATURES**

Standard auto control system

Exhaust system (including until muffler)

Documents

Oil drain valve

Starting batteries (maintenance-free &amp; watering-free) with connective wires

MCCB

Base fuel tank

**MODEL: BF-DW190****400V | 1500rpm | 50Hz****OPTIONS**

Daily fuel tank

Rainproof type

Remote control panel

Alternator heater

Soundproof type

Paralleling system

Spare parts

Trailer type

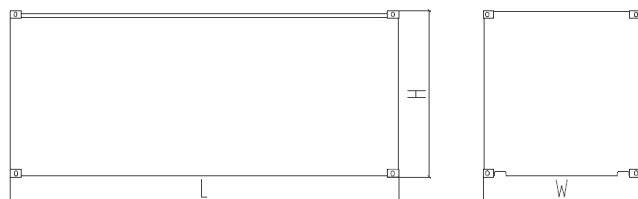
Switch box

Automatic transfer switch

**DIMENSIONS & WEIGHT****Standard Configuration (open type)**

Overall Dimensions: 2650×950×1750 mm

Weight: 2000 kg

**Soundproof Type**

Overall Dimensions: 3590×1250×2050 mm

Weight: 2800 kg

*Specifications are subject to change without notice.***BAIFA POWER (WUXI) LTD.****WEBSITE: [WWW.BAIFAPOWER.COM](http://WWW.BAIFAPOWER.COM)****EMAIL: [MARKETING@BAIFAPOWER.COM](mailto:MARKETING@BAIFAPOWER.COM)****TEL: +86-510-85342633**

Comprehensive Solutions For

**POWER GENERATION**