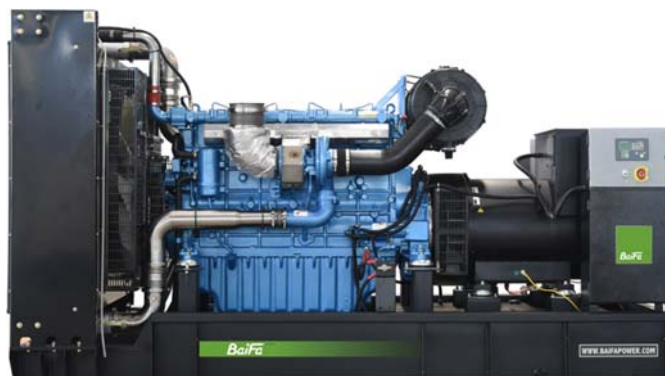


MODEL: BF-BD760

400V | 1500rpm | 50Hz



ESP Standby Power	760 kVA	PRP Prime Power	700 kVA
ENGINE	Baudouin	ALTERNATOR	STAMFORD
	6M33G750/5		S5L1D-G4

GENERAL FEATURES

Engine: Baudouin 6M33G750/5

Alternator: single bearing, IP23, insulation class H

40°C radiator, fans are driven by belt, with safety guard

Dry type air filter, fuel filter & oil filter

Vibration damper

Standard control panel

24V charging alternator

Exhaust bellows, elbows, flange & muffler

Lead-acid batteries, rack and cables

User manual

**MODEL: BF-BD760****400V | 1500rpm | 50Hz****GENERATOR RATINGS**

Voltage	Hz	Phase	PF (COSΦ)	Standby Amps	Standby Ratings (kW / kVA)	Prime Ratings (kW / kVA)
440/254	50	3	0.8	997	608kW/760kVA	560kW/700kVA
415/240	50	3	0.8	1057	608kW/760kVA	560kW/700kVA
400/230	50	3	0.8	1097	608kW/760kVA	560kW/700kVA
380/220	50	3	0.8	1155	608kW/760kVA	560kW/700kVA

Prime Power (PRP): Prime power is available for an unlimited number of annual hours in variable load application, in accordance with GB/T2820 (eqv ISO 8528) ; A 10% overload capability is available for a period of 1 hour within a 12-hour period of operation.

Standby Power Rating (ESP): The standby power rating is applicable for supplying emergency power for the duration of a utility power interruption. No overload, utility parallel or negotiated outage operation capability is available at this rating.

SALES PROMISES

Baifa Power provides a full line of brand new and high quality products. Each and every unit is strictly factory tested.

Warranty is according to our standard conditions: 15 months from the date BAIFA sold to the first buyer or one year after installation or 1000 running hours (accumulated), whichever comes first.

Service and parts are available from Baifa Power or distributors in your location.

MODEL: BF-BD760
400V | 1500rpm | 50Hz

ENGINE SPECIFICATION

Manufacturer / Model	Baudouin 6M33G750/5
Air intake system	Turbo, intercooling
Fuel system	Mechanical pump
Cylinder arrangement	6 cylinders in line
Displacement	19.6 L
Bore and stroke	150×185 mm
Compression ratio	15:1
Rated speed	1500rpm
Max. Standby power at rated speed	670KW
Governor type	Electronic

Exhaust System

Exhaust gas flow	187 m ³ /min
Exhaust temperature	550°C
Max back pressure	7.5 kPa

Air Intake System

Max intake restriction	6.5 kPa
Combustion air flow	54.6 m ³ /min
Air flow required for radiator	783 m ³ /min

**MODEL: BF-BD760****400V | 1500rpm | 50Hz****Fuel System**

Fuel consumption @ 100% (Prime Power) Load	208.1 g/kWh	151.6 L/h
Fuel consumption @ 75% (Prime Power) Load	204.2 g/kWh	112.7 L/h
Fuel consumption @ 50% (Prime Power) Load	209 g/kWh	79.3 L/h

Oil System

Total oil capacity	64L
Oil consumption ratio based on fuel consumption data	$\leq 0.3 \%$
Oil sump capacity	36~61L

Cooling System

Coolant capacity	159L
Max water temperature	105°C



MODEL: BF-BD760

400V | 1500rpm | 50Hz

ALTERNATOR SPECIFICATION

Industrial alternators meet the requirements of the relevant parts of the BS5000, VDE 0530, NEMA MG1-22, IEC34, CSA 22.2-100 and AS1359.

Alternator Data

Number of Phase	3
Connecting Type	3 Phase and 4 Wires, Y type connecting
Number of Bearing	1
Power Factor	0.8
Protection Class	IP23
Altitude	≤1000m
Exciter Type	Brushless exciting
Insulation Class/Temperature Rise	H/H
Telephone Influence Factor (TIF)	<50
THF	<2%
Alternator Capacity	700kVA
Alternator Efficiency	94.8%



MODEL: BF-BD760

400V | 1500rpm | 50Hz

GENERATING SET DATA

Related range of voltage setting	$\geq \pm 5\%$
Steady-state voltage deviation	$\leq \pm 1\%$
Transient voltage deviation (100 % sudden power decrease)	$\leq +25\%$
Transient voltage deviation (sudden power increase)	$\leq -20\%$
Voltage recovery time (100 % sudden power decrease)	$\leq 6S$
Voltage recovery time (sudden power increase)	$\leq 6S$
Related range of frequency setting	0-5% adjustable
Steady-state frequency band	$\leq 1.5\%$
Transient frequency deviation (100 % sudden power decrease)	$\leq +12\%$
Transient frequency deviation (sudden power increase)	$\leq -10\%$
Frequency recovery time (100 % sudden power decrease)	$\leq 5S$
Frequency recovery time (sudden power increase)	$\leq 5S$

STANDARD FEATURES

Standard auto control system	Exhaust system (including until muffler)	Documents
Oil drain valve	Starting batteries (maintenance-free & watering-free) with connective wires	MCCB

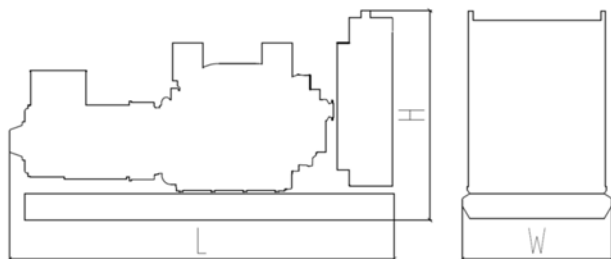
MODEL: BF-BD760

400V | 1500rpm | 50Hz

OPTIONS

Daily fuel tank	Rainproof type	Remote control panel
Alternator heater	Soundproof type	Paralleling system
Spare parts	Trailer type	Switch box
Automatic transfer switch		

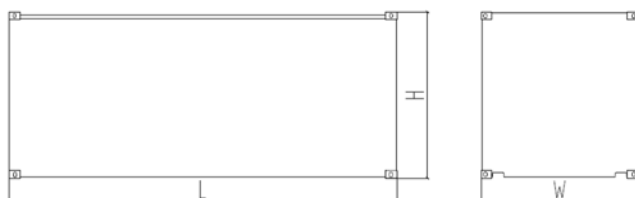
DIMENSIONS & WEIGHT



Standard Configuration (open type)

Overall Dimensions: 3950×1640×2050 mm

Weight: 5500 kg



Soundproof Type

Overall Dimensions: 5530×1860×2550 mm

Weight: 7600 kg

Specifications are subject to change without notice.

BAIFA POWER (WUXI) LTD.

WEBSITE: WWW.BAIFAPOWER.COM

EMAIL: MARKETING@BAIFAPOWER.COM

TEL: +86-510-85342633