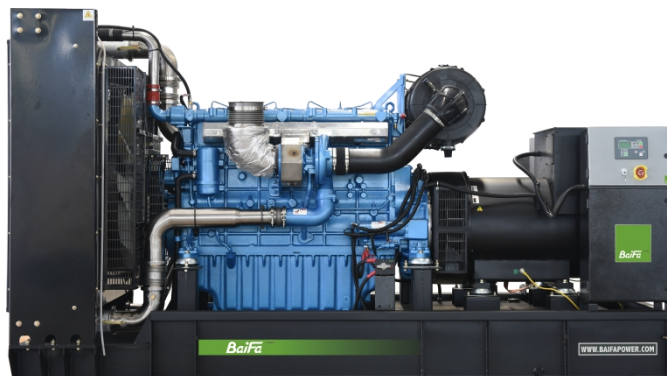


MODEL: BF-BD550-60
440V | 1800rpm | 60Hz


ESP Standby Power	550kVA	PRP Prime Power	500kVA
ENGINE	Baudouin 6M21G460/6	ALTERNATOR	STAMFORD S4L1D-F41

GENERAL FEATURES

Engine: Baudouin 6M21G460/6

Alternator: single bearing, IP23, insulation class H

40°C radiator, fans are driven by belt, with safety guard

Dry type air filter, fuel filter & oil filter

Vibration damper

Standard control panel

24V charging alternator

Exhaust bellows, elbows, flange & muffler

Lead-acid batteries, rack and cables

User manual

MODEL: BF-BD550-60**440V | 1800rpm | 60Hz**

GENERATOR RATINGS

Voltage	Hz	Phase	PF (COS Φ)	Standby Amps	Standby Ratings (kW / kVA)	Prime Ratings (kW / kVA)
480/277	60	3	0.8	662	440kW/550kVA	400kW/500kVA
460/266	60	3	0.8	690	440kW/550kVA	400kW/500kVA
440/254	60	3	0.8	722	440kW/550kVA	400kW/500kVA
416/240	60	3	0.8	763	440kW/550kVA	400kW/500kVA

Prime Power (PRP): Prime power is available for an unlimited number of annual hours in variable load application, in accordance with GB/T2820 (eqv ISO 8528) ; A 10% overload capability is available for a period of 1 hour within a 12-hour period of operation.

Standby Power Rating (ESP): The standby power rating is applicable for supplying emergency power for the duration of a utility power interruption. No overload, utility parallel or negotiated outage operation capability is available at this rating.

SALES PROMISES

Baifa Power provides a full line of brand new and high quality products. Each and every unit is strictly factory tested.

Warranty is according to our standard conditions: 15 months from the date BAIFA sold to the first buyer or one year after installation or 1000 running hours (accumulated), whichever comes first.

Service and parts are available from Baifa Power or distributors in your location.

**MODEL: BF-BD550-60****440V | 1800rpm | 60Hz****ENGINE SPECIFICATION**

Manufacturer / Model	Baudouin 6M21G460/6
Air intake system	Turbocharged and Aftercooled
Fuel system	High Pressure Common Rail
Cylinder arrangement	6 in line
Displacement	12.54L
Bore and stroke	127 × 165 mm
Compression ratio	15.2
Rated speed	1800rpm
Max. Standby power at rated speed	510kW
Governor type	ECU

Exhaust System

Exhaust gas flow	120 m ³ /min
Exhaust temperature	580°C
Max back pressure	12kPa

Air Intake System

Max intake restriction	7kPa
Combustion air flow	36.6 m ³ /min
Air flow required for radiator	569 m ³ /min

**MODEL: BF-BD550-60****440V | 1800rpm | 60Hz****Fuel System**

Fuel consumption @ 100% (Prime Power) Load	204.6g/kWh	107.0L/h
Fuel consumption @ 75% (Prime Power) Load	193.5g/kWh	76.9L/h
Fuel consumption @ 50% (Prime Power) Load	200.5g/kWh	54.7L/h

Oil System

Total oil capacity	38L
Oil sump capacity	29-34L
Oil fuel consumption ratio based on engine fuel consumption data	$\leq 0.2\%$

Cooling System

Coolant capacity	62L
Max water temperature	105°C

**MODEL: BF-BD550-60****440V | 1800rpm | 60Hz**

ALTERNATOR SPECIFICATION

Industrial alternators meet the requirements of the relevant parts of the BS5000, VDE 0530, NEMA MG1-22, IEC34, CSA 22.2-100 and AS1359.

Alternator Data

Number of Phase	3
Connecting Type	3 Phase and 4 Wires, Y type connecting
Number of Bearing	1
Power Factor	0.8
Protection Class	IP23
Altitude	≤1000m
Exciter Type	Brushless exciting
Insulation Class/Temperature Rise	H/H
Telephone Influence Factor (TIF)	<50
THF	<2%
Alternator Capacity	500kVA
Alternator Efficiency	93.2%

MODEL: BF-BD550-60
440V | 1800rpm | 60Hz

GENERATING SET DATA

Related range of voltage setting	$\geq \pm 5\%$
----------------------------------	----------------

Steady-state voltage deviation	$\leq \pm 1\%$
--------------------------------	----------------

Transient voltage deviation (100 % sudden power decrease)	$\leq +20\%$
---	--------------

Transient voltage deviation (sudden power increase)	$\leq -15\%$
---	--------------

Voltage recovery time (100 % sudden power decrease)	$\leq 4S$
---	-----------

Voltage recovery time (sudden power increase)	$\leq 4S$
---	-----------

Related range of frequency setting	0-5% adjustable
------------------------------------	-----------------

Steady-state frequency band	$\leq 0.5\%$
-----------------------------	--------------

Transient frequency deviation (100 % sudden power decrease)	$\leq +10\%$
---	--------------

Transient frequency deviation (sudden power increase)	$\leq -7\%$
---	-------------

Frequency recovery time (100 % sudden power decrease)	$\leq 3S$
---	-----------

Frequency recovery time (sudden power increase)	$\leq 3S$
---	-----------

STANDARD FEATURES

Standard auto control system	Exhaust system (including until muffler)	Documents
Oil drain valve	Starting batteries (maintenance-free & watering-free) with connective wires	MCCB

MODEL: BF-BD550-60**440V | 1800rpm | 60Hz****OPTIONS**

Daily fuel tank

Rainproof type

Remote control panel

Alternator heater

Soundproof type

Paralleling system

Spare parts

Trailer type

Switch box

Automatic transfer switch

DIMENSIONS & WEIGHT**Standard Configuration (open type)**

Overall Dimensions: 2950×1110×1730 mm

Weight: 3080 kg

**Soundproof Type**

Overall Dimensions: 4230×1460×2150 mm

Weight: 4430 kg

*Specifications are subject to change without notice.***BAIFA POWER (WUXI) LTD.****WEBSITE: WWW.BAIFAPOWER.COM****EMAIL: MARKETING@BAIFAPOWER.COM****TEL: +86-510-85342633**

Comprehensive Solutions For

POWER GENERATION