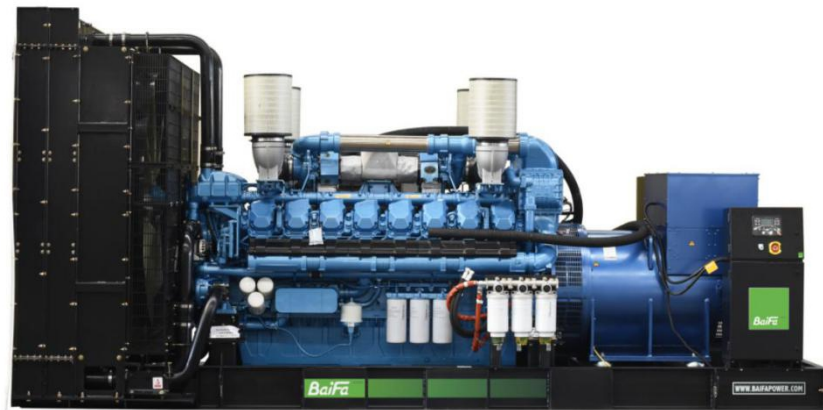


MODEL: BF-BD2200-60

440V | 1800rpm | 60Hz



ESP Standby Power	2200kVA	PRP Prime Power	N/A
ENGINE	Baudouin 16M33G1750/6	ALTERNATOR	STAMFORD PI734E1

GENERAL FEATURES

Engine: Baudouin 16M33G1750/6

Alternator: single bearing, IP23, insulation class H

40°C radiator, fans are driven by belt, with safety guard

Dry type air filter, fuel filter & oil filter

Vibration damper

Standard control panel

24V charging alternator

Exhaust bellows, elbows, flange & muffler

Lead-acid batteries, rack and cables

User manual

MODEL: BF-BD2200-60**440V | 1800rpm | 60Hz**

GENERATOR RATINGS

Voltage	Hz	Phase	PF (COS Φ)	Standby Amps	Standby Ratings (kW / kVA)	Prime Ratings (kW / kVA)
480/277	60	3	0.8	2646	1760kW/2200kVA	N/A
460/266	60	3	0.8	2761	1760kW/2200kVA	N/A
440/254	60	3	0.8	2887	1760kW/2200kVA	N/A
416/240	60	3	0.8	3053	1760kW/2200kVA	N/A

Prime Power (PRP): Prime power is available for an unlimited number of annual hours in variable load application, in accordance with GB/T2820 (eqv ISO 8528) ; A 10% overload capability is available for a period of 1 hour within a 12-hour period of operation.

Standby Power Rating (ESP): The standby power rating is applicable for supplying emergency power for the duration of a utility power interruption. No overload, utility parallel or negotiated outage operation capability is available at this rating.

SALES PROMISES

Baifa Power provides a full line of brand new and high quality products. Each and every unit is strictly factory tested.

Warranty is according to our standard conditions: 15 months from the date BAIFA sold to the first buyer or one year after installation or 1000 running hours (accumulated), whichever comes first.

Service and parts are available from Baifa Power or distributors in your location.

**MODEL: BF-BD2200-60****440V | 1800rpm | 60Hz****ENGINE SPECIFICATION**

Manufacturer / Model	Baudouin 16M33G1750/6
----------------------	-----------------------

Air intake system	Turbocharged and Aftercooled
-------------------	------------------------------

Fuel system	High Pressure Common Rail
-------------	---------------------------

Cylinder arrangement	16 in V
----------------------	---------

Displacement	52.3L
--------------	-------

Bore and stroke	150 × 185 mm
-----------------	--------------

Compression ratio	15
-------------------	----

Rated speed	1800rpm
-------------	---------

Max. Standby power at rated speed	1920kW
-----------------------------------	--------

Governor type	ECU
---------------	-----

Exhaust System

Exhaust gas flow	480 m ³ /min
------------------	-------------------------

Exhaust temperature	550°C
---------------------	-------

Max back pressure	7.5kPa
-------------------	--------

Air Intake System

Max intake restriction	5kPa
------------------------	------

Combustion air flow	150 m ³ /min
---------------------	-------------------------

Air flow required for radiator	2340 m ³ /min
--------------------------------	--------------------------

**MODEL: BF-BD2200-60****440V | 1800rpm | 60Hz****Fuel System**

Fuel consumption @ 100% (Standby Power) Load	217.2g/kWh	485.9L/h
Fuel consumption @ 75% (Standby Power) Load	199.2g/kWh	339.2L/h
Fuel consumption @ 50% (Standby Power) Load	201.6g/kWh	234.7L/h

Oil System

Total oil capacity	175L
Oil sump capacity	114-171L
Oil fuel consumption ratio based on engine fuel consumption data	$\leq 0.3\%$

Cooling System

Coolant capacity	542L
Max water temperature	103°C

**MODEL: BF-BD2200-60****440V | 1800rpm | 60Hz**

ALTERNATOR SPECIFICATION

Industrial alternators meet the requirements of the relevant parts of the BS5000, VDE 0530, NEMA MG1-22, IEC34, CSA 22.2-100 and AS1359.

Alternator Data

Number of Phase	3
Connecting Type	3 Phase and 4 Wires, Y type connecting
Number of Bearing	1
Power Factor	0.8
Protection Class	IP23
Altitude	≤1000m
Exciter Type	Brushless exciting
Insulation Class/Temperature Rise	H/H
Telephone Influence Factor (TIF)	<50
THF	<2%
Alternator Capacity	2210kVA
Alternator Efficiency	95.8%

**MODEL: BF-BD2200-60****440V | 1800rpm | 60Hz**

GENERATING SET DATA

Related range of voltage setting	$\geq \pm 5\%$
----------------------------------	----------------

Steady-state voltage deviation	$\leq \pm 1\%$
--------------------------------	----------------

Transient voltage deviation (100 % sudden power decrease)	$\leq +20\%$
---	--------------

Transient voltage deviation (sudden power increase)	$\leq -15\%$
---	--------------

Voltage recovery time (100 % sudden power decrease)	$\leq 4S$
---	-----------

Voltage recovery time (sudden power increase)	$\leq 4S$
---	-----------

Related range of frequency setting	0-5% adjustable
------------------------------------	-----------------

Steady-state frequency band	$\leq 0.5\%$
-----------------------------	--------------

Transient frequency deviation (100 % sudden power decrease)	$\leq +10\%$
---	--------------

Transient frequency deviation (sudden power increase)	$\leq -7\%$
---	-------------

Frequency recovery time (100 % sudden power decrease)	$\leq 3S$
---	-----------

Frequency recovery time (sudden power increase)	$\leq 3S$
---	-----------

STANDARD FEATURES

Standard auto control system	Exhaust system (including until muffler)	Documents
Oil drain valve	Starting batteries (maintenance-free & watering-free) with connective wires	

MODEL: BF-BD2200-60**440V | 1800rpm | 60Hz****OPTIONS**

Daily fuel tank

Rainproof type

Remote control panel

Alternator heater

Soundproof type

Paralleling system

Spare parts

Trailer type

Switch box

Automatic transfer switch

DIMENSIONS & WEIGHT**Standard Configuration (open type)**

Overall Dimensions: 5220×2200×2550 mm

Weight: 12500 kg

**Soundproof Type (standard 40'ft HQ container)**

Overall Dimensions: 12192×2438×2896 mm

Weight: 22500 kg

*Specifications are subject to change without notice.***BAIFA POWER (WUXI) LTD.****WEBSITE: WWW.BAIFAPOWER.COM****EMAIL: MARKETING@BAIFAPOWER.COM****TEL: +86-510-85342633**

Comprehensive Solutions For

POWER GENERATION