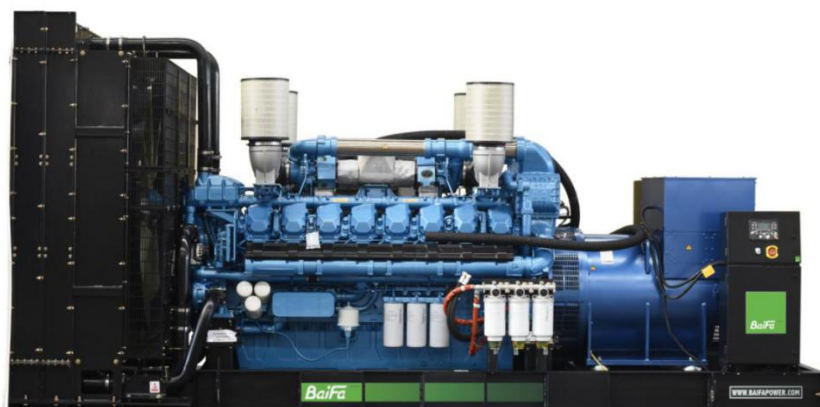


MODEL: BF-BD2060-60
440V | 1800rpm | 60Hz


ESP Standby Power	2060kVA	PRP Prime Power	1875kVA
ENGINE	Baudouin 16M33G1650/6	ALTERNATOR	STAMFORD PI734D1

GENERAL FEATURES

Engine: Baudouin 16M33G1650/6

Alternator: single bearing, IP23, insulation class H

40°C radiator, fans are driven by belt, with safety guard

Dry type air filter, fuel filter & oil filter

Vibration damper

Standard control panel

24V charging alternator

Exhaust bellows, elbows, flange & muffler

Lead-acid batteries, rack and cables

User manual

MODEL: BF-BD2060-60**440V | 1800rpm | 60Hz**

GENERATOR RATINGS

Voltage	Hz	Phase	PF (COS Φ)	Standby Amps	Standby Ratings (kW / kVA)	Prime Ratings (kW / kVA)
480/277	60	3	0.8	2478	1648kW/2060kVA	1500kW/1875kVA
460/266	60	3	0.8	2586	1648kW/2060kVA	1500kW/1875kVA
440/254	60	3	0.8	2703	1648kW/2060kVA	1500kW/1875kVA
416/240	60	3	0.8	2859	1648kW/2060kVA	1500kW/1875kVA

Prime Power (PRP): Prime power is available for an unlimited number of annual hours in variable load application, in accordance with GB/T2820 (eqv ISO 8528) ; A 10% overload capability is available for a period of 1 hour within a 12-hour period of operation.

Standby Power Rating (ESP): The standby power rating is applicable for supplying emergency power for the duration of a utility power interruption. No overload, utility parallel or negotiated outage operation capability is available at this rating.

SALES PROMISES

Baifa Power provides a full line of brand new and high quality products. Each and every unit is strictly factory tested.

Warranty is according to our standard conditions: 15 months from the date BAIFA sold to the first buyer or one year after installation or 1000 running hours (accumulated), whichever comes first.

Service and parts are available from Baifa Power or distributors in your location.

**MODEL: BF-BD2060-60****440V | 1800rpm | 60Hz****ENGINE SPECIFICATION**

Manufacturer / Model	Baudouin 16M33G1650/6
Air intake system	Turbocharged and Aftercooled
Fuel system	High Pressure Common Rail
Cylinder arrangement	16 in V
Displacement	52.3L
Bore and stroke	150 × 185 mm
Compression ratio	15
Rated speed	1800rpm
Max. Standby power at rated speed	1785kW
Governor type	ECU

Exhaust System

Exhaust gas flow	425 m ³ /min
Exhaust temperature	550°C
Max back pressure	7.5kPa

Air Intake System

Max intake restriction	5kPa
Combustion air flow	143 m ³ /min
Air flow required for radiator	2340 m ³ /min

**MODEL: BF-BD2060-60****440V | 1800rpm | 60Hz****Fuel System**

Fuel consumption @ 100% (Prime Power) Load	197.9g/kWh	379.1L/h
Fuel consumption @ 75% (Prime Power) Load	195g/kWh	285.3L/h
Fuel consumption @ 50% (Prime Power) Load	193.8g/kWh	194.6L/h

Oil System

Total oil capacity	175L
Oil sump capacity	114-171L
Oil fuel consumption ratio based on engine fuel consumption data	$\leq 0.3\%$

Cooling System

Coolant capacity	542L
Max water temperature	103°C

**MODEL: BF-BD2060-60****440V | 1800rpm | 60Hz**

ALTERNATOR SPECIFICATION

Industrial alternators meet the requirements of the relevant parts of the BS5000, VDE 0530, NEMA MG1-22, IEC34, CSA 22.2-100 and AS1359.

Alternator Data

Number of Phase	3
Connecting Type	3 Phase and 4 Wires, Y type connecting
Number of Bearing	1
Power Factor	0.8
Protection Class	IP23
Altitude	≤1000m
Exciter Type	Brushless exciting
Insulation Class/Temperature Rise	H/H
Telephone Influence Factor (TIF)	<50
THF	<2%
Alternator Capacity	1935kVA
Alternator Efficiency	96.1%

**MODEL: BF-BD2060-60****440V | 1800rpm | 60Hz**

GENERATING SET DATA

Related range of voltage setting	$\geq \pm 5\%$
----------------------------------	----------------

Steady-state voltage deviation	$\leq \pm 1\%$
--------------------------------	----------------

Transient voltage deviation (100 % sudden power decrease)	$\leq +20\%$
---	--------------

Transient voltage deviation (sudden power increase)	$\leq -15\%$
---	--------------

Voltage recovery time (100 % sudden power decrease)	$\leq 4S$
---	-----------

Voltage recovery time (sudden power increase)	$\leq 4S$
---	-----------

Related range of frequency setting	0-5% adjustable
------------------------------------	-----------------

Steady-state frequency band	$\leq 0.5\%$
-----------------------------	--------------

Transient frequency deviation (100 % sudden power decrease)	$\leq +10\%$
---	--------------

Transient frequency deviation (sudden power increase)	$\leq -7\%$
---	-------------

Frequency recovery time (100 % sudden power decrease)	$\leq 3S$
---	-----------

Frequency recovery time (sudden power increase)	$\leq 3S$
---	-----------

STANDARD FEATURES

Standard auto control system	Exhaust system (including until muffler)	Documents
------------------------------	--	-----------

Oil drain valve	Starting batteries (maintenance-free & watering-free) with connective wires	
-----------------	---	--

MODEL: BF-BD2060-60**440V | 1800rpm | 60Hz****OPTIONS**

Daily fuel tank

Rainproof type

Remote control panel

Alternator heater

Soundproof type

Paralleling system

Spare parts

Trailer type

Switch box

Automatic transfer switch

DIMENSIONS & WEIGHT**Standard Configuration (open type)**

Overall Dimensions: 5220×2200×2550 mm

Weight: 12000 kg

**Soundproof Type (standard 20'ft GP container)**

Overall Dimensions: 12192×2438×2896 mm

Weight: 22000 kg

*Specifications are subject to change without notice.***BAIFA POWER (WUXI) LTD.****WEBSITE: WWW.BAIFAPOWER.COM****EMAIL: MARKETING@BAIFAPOWER.COM****TEL: +86-510-85342633**

Comprehensive Solutions For

POWER GENERATION